



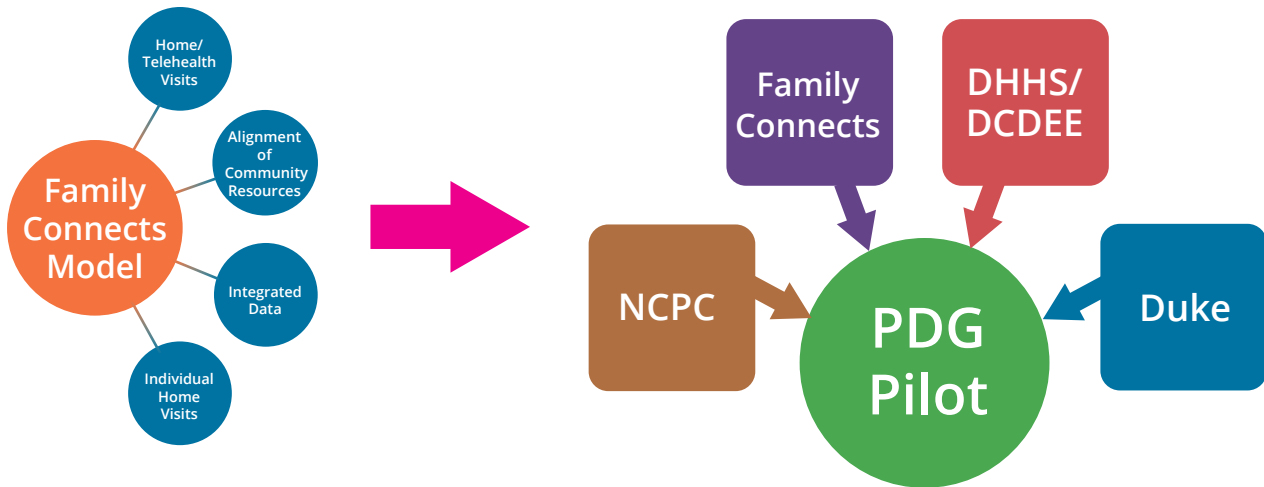
In 2018, the NC - DHHS (DCDEE) selected Family Connects as a model for universal newborn home-visiting for a 3-year preschool development grant (PDG). Smart Start (NCPC) was selected as an implementation partner in this work due to their niche, mission, and ability to support communities at a local level. Duke University serves as an evaluation partner for one of the pilot areas that is focused solely on telehealth home visiting for the first year of implementation.



Together, these agencies are working to promote family engagement by connecting and referring to a broad array of child and family services across the Birth – Five (B-5) system in three pilot regions, made up of 8 counties.

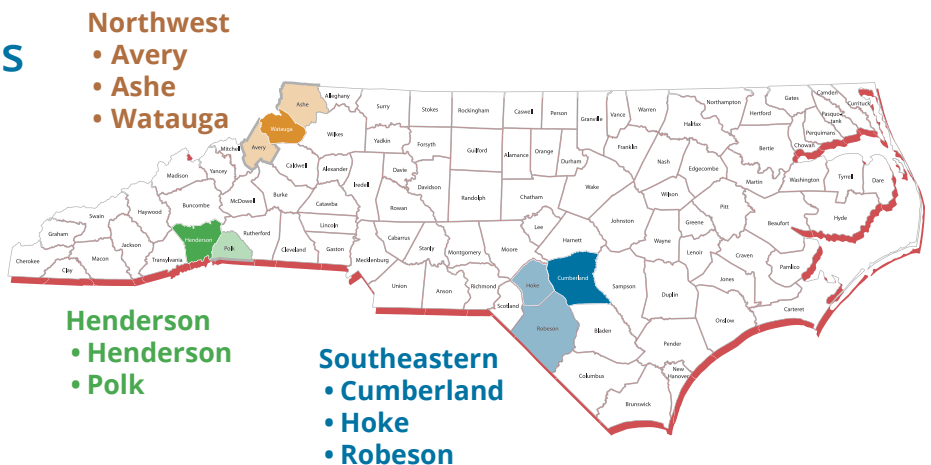
The Family Connects Model

The Family Connects Model is the only universally offered model that meets the criteria of an evidence-based childhood home visiting service per Federal MIECHV standards.

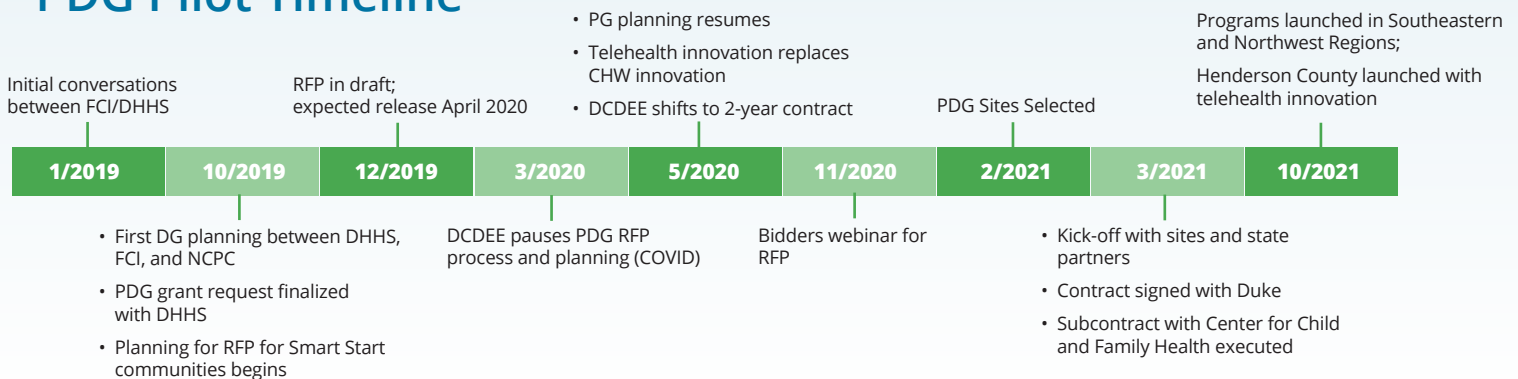


PDG Pilot Communities

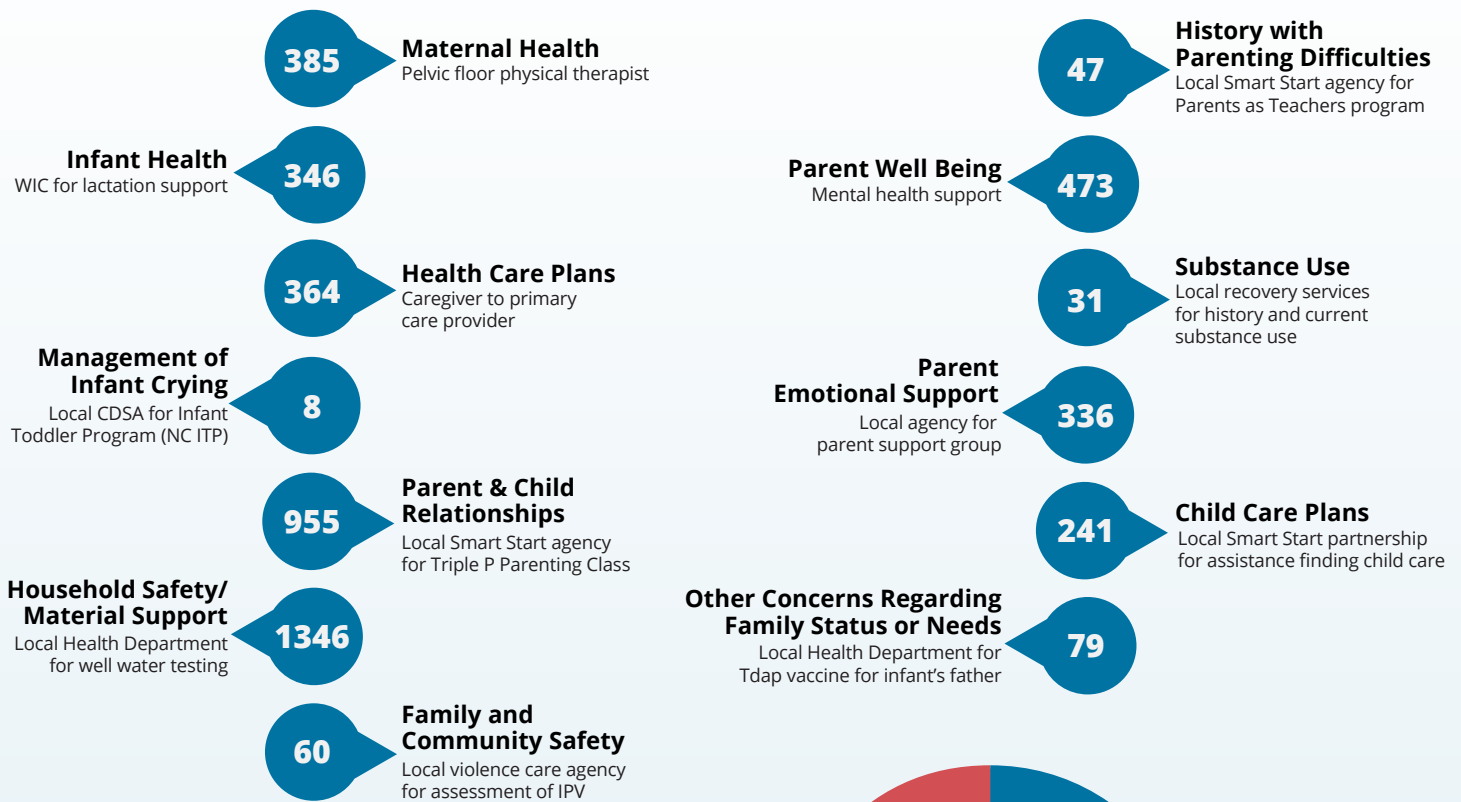
For nearly 30 years the Smart Start Network, a network of 75 county-based organizations has served all 100 counties in North Carolina, working to ensure children and families have the tools they need to thrive.



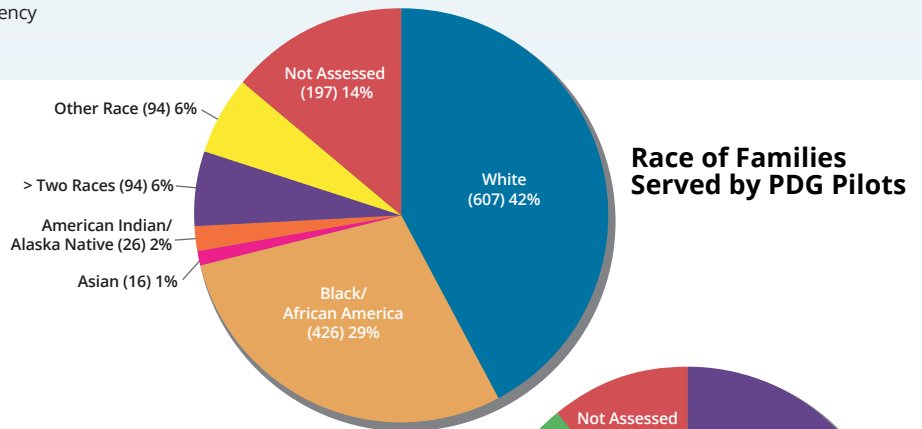
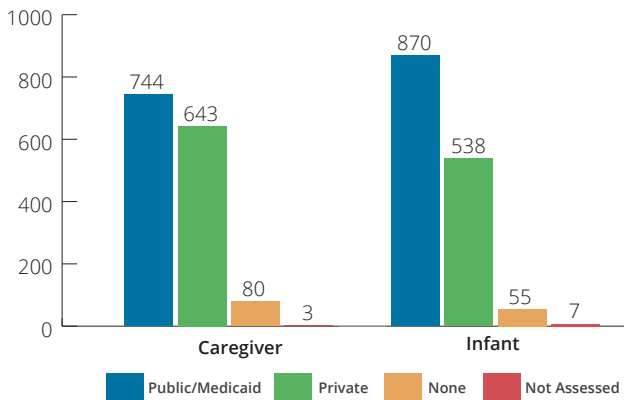
PDG Pilot Timeline



Number Referrals Made for Families via PDG Pilots

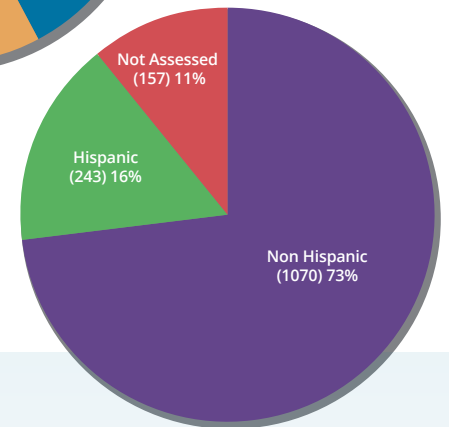


Insurance Types of PDG Pilot Recipients



Race of Families Served by PDG Pilots

Ethnicities of Families Served by PDG Pilots



Family Connects Model Impact at a Glance



of the families whose needs were assessed during a Family Connects visit had some type of need identified by the nurse.



Reduction in emergency room visits and hospital overnight stays were in the first year of life



Reduction in maternal-reported possible post-partum clinical anxiety



Reduction in Child Protective Service investigations for suspected abuse and neglect through age 2