

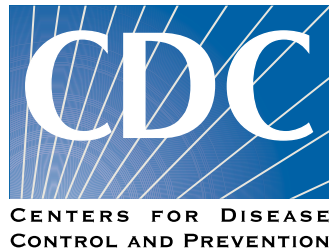
HEALTHY AND RESILIENT COMMUNITIES

Resilience Network Meeting | March 15, 2021
Safiyah Jackson, Chief Strategy Officer



Collaborators

- Funders:



Kate B. Reynolds
Charitable Trust

- ACES Connection:
Join NC's Community at

www.acesconnection.com/g/north-carolina-aces-connection

Collaborators

Kellin Foundation - *better understand current statewide initiatives and support alignment*

Growing Resilient Communities

Prevent Child Abuse North Carolina

ASPIRE Project

Trauma-Informed Communities Project at the Center for Child & Family Health

Collaborative Learning Institute (CLI)

Injury-Free NC Academy & Violence Prevention Coordinating Group

Good News in NC



Recent announcement that NC's court system will integrate practices and policies based on the science of ACEs



Plans for a statewide commission focusing on the science of resilience in NC courts



Consultants developing an ACEs science and trauma-informed curricula for the judicial branch



Acknowledgement of the importance of trauma and resilience in our communities

History



Background



NC team in talks with George Washington University – Milken School of Public Health: Building Community Resilience (BCR) team

BCR team support by fostering engagement between grassroots community services and public and private systems to develop a protective buffer against Adverse Childhood Experiences (ACEs) occurring in Adverse Community Environments (ACEs) – the “Pair of ACEs.”

Purpose



Leverage Smart Start's deep roots in local communities across NC



Acknowledgement of the work being done locally



Honor the powerful work of local initiatives



Create shared understanding around language



Create a framework to support local initiatives

Background & Timeline



Building Community Resilience (BCR): Introduction to the model and increased statewide interest in addressing adverse childhood experiences (ACEs)



Funding and leadership support from NCDPH and other NC thought leaders and stakeholders, alignment with the Early Childhood Action Plan



Smart Start Network as a pre-existing collaborative, systems-building infrastructure; local efforts to increase awareness about trauma & ACEs



Resilient Communities Officer role at NCPC with statewide scope to support local cross-sector coalitions and promote strategies that realize systems change



We started by:



UNDERSTANDING CURRENT
MOMENTUM AND
IDENTIFYING THEMES



DEFINING SHARED
UNDERSTANDING &
LANGUAGE

We are committed to:

Community
Responsive

Family
Centered

Data &
Science
Driven

Asset and
Trauma
Informed

Racial
Justice
Equity
Focused

Our Team:

Mission To foster shared understanding of community resilience and adversity in North Carolina and how it intersects with individual resilience and adversity, in order to create a shared commitment of implementing innovative strategies that promote resilience for children, families, and communities across NC

State Advisory Council

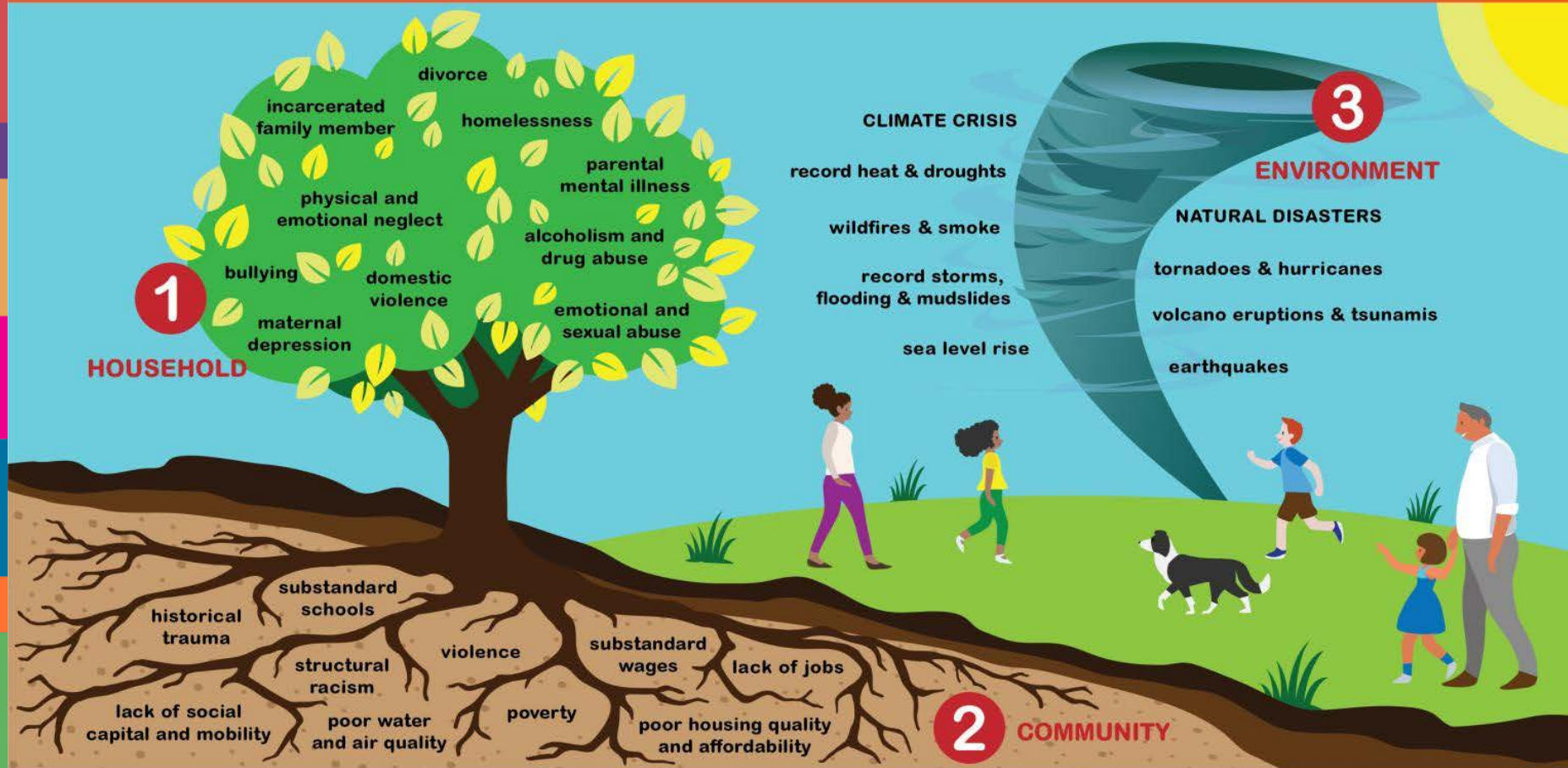
- Establish explicit alignment among relevant initiatives and identify opportunities for ongoing partnership
- Create buy-in across agencies regarding frameworks, language, and supporting materials for the initiative

Community Advisory Council

- Serve as accountable partners for the initiative's deliverables help ensure current local practice aligns with the developing frameworks, language, and supporting materials
- Explore how local strategies are embedded in the future statewide recommendations

3 Realms of ACEs

ACEs Connection accelerates the global movement to prevent and heal adverse childhood experiences (ACEs), and supports communities to work collaboratively to solve our most intractable problems. Left unaddressed, toxic stress from ACEs harms children and families, organizations, systems and communities, and reduces the ability of individuals and entities to respond to stressful events with resiliency. The ACEs in these three realms intertwine throughout people's lives, and affect the viability of organizations, systems and communities.



Thanks to [Building Community Resilience Collaborative and Networks](#) and the [International Transformational Resilience Coalition](#) for inspiration and guidance. Please visit [ACESConnection.com](https://www.acesconnection.com) to learn more about the science of ACEs and join the movement to prevent ACEs, heal trauma and build resilience.



Use the Lens of History to Identify Our Blind Spots



Power
 Atrocious Cultural
 Experiences
 "ACEs" in Context

Ghosh Ippen & Mays, 2016

Original "ACES" Historical Trauma	Current Systemic Oppression	"ACES"
Genocide	Systemic Bias	Abuse
Slavery	Police Violence	
Colonization	Mass Incarceration	Neglect
Denial of Basic Human Rights	Inequities in Child Welfare	
Removal of Property	Inequities in Preschool Suspension	
Forced Family Separations	Inequities in Access to Job, Housing	Household Dysfunction
Parents could not protect children from "society" – Different ways of protecting	Reproductive Inequities	
	Inequities in Pay	
	Segregation	

Ghosh Ippen, 2017 50

Thank You



Ellis, W., Dietz, W. (2017) A New Framework for Addressing Adverse Childhood and Community Experiences: The Building Community Resilience (BCR) Model. *Academic Pediatrics*. 17 (2017) pp. S86-S93. DOI information: 10.1016/j.acap.2016.12.011



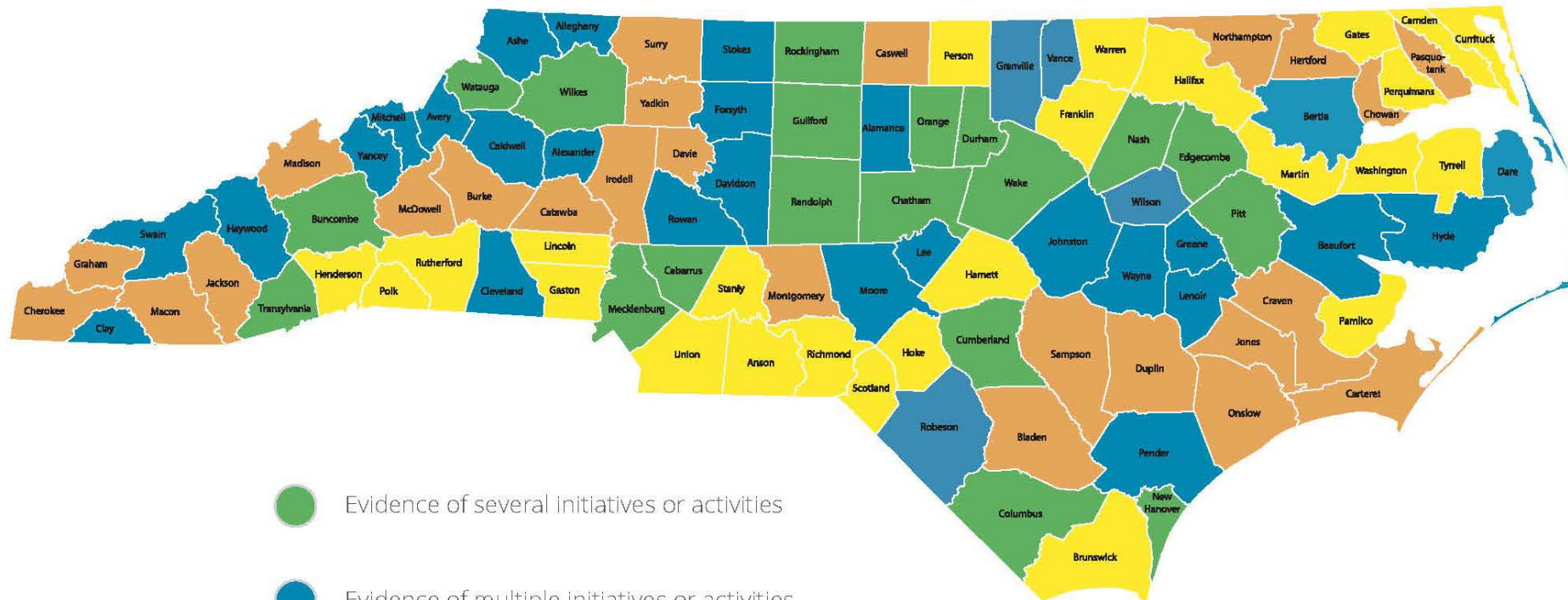
This work is licensed under the CC-BY-NC-SA 4.0 License. To view a copy of the license, visit <https://creativecommons.org/licenses/by-nc-sa/4.0/>. Noncommercial use of this material is allowed, including modification, with attribution to the license holder: Building Community Resilience, Redstone Global Center for Prevention and Wellness, Milken Institute School of Public Health, George Washington University. Visit go.gwu.edu/BCR for the original work.



Smart Start®

Initiative Supporting Healthy & Resilient Communities in North Carolina

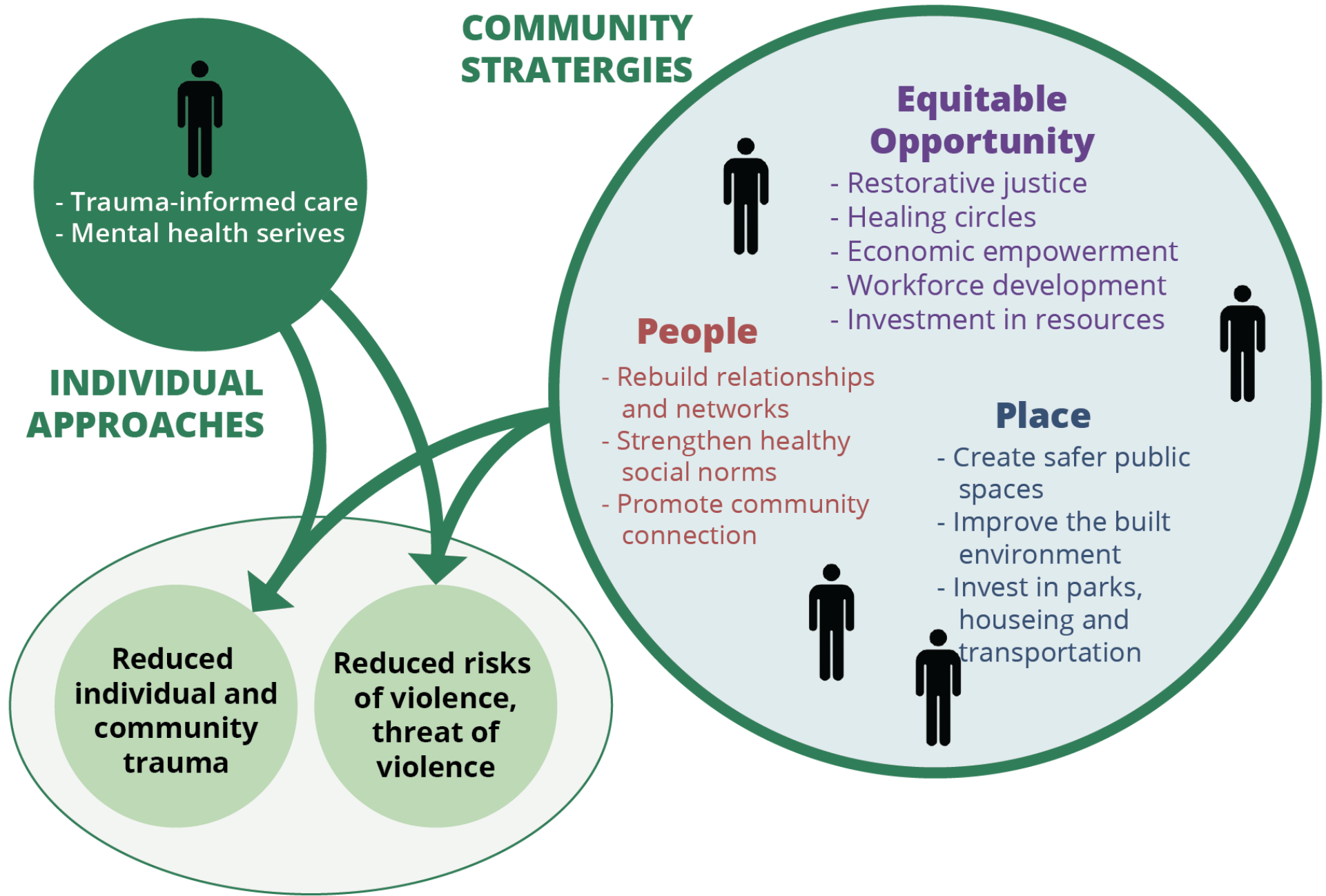
(as of May 2020 and updated version coming 2021)



- Evidence of several initiatives or activities
- Evidence of multiple initiatives or activities
- Evidence of a few initiatives or activities
- Evidence of one or two initiatives or activities

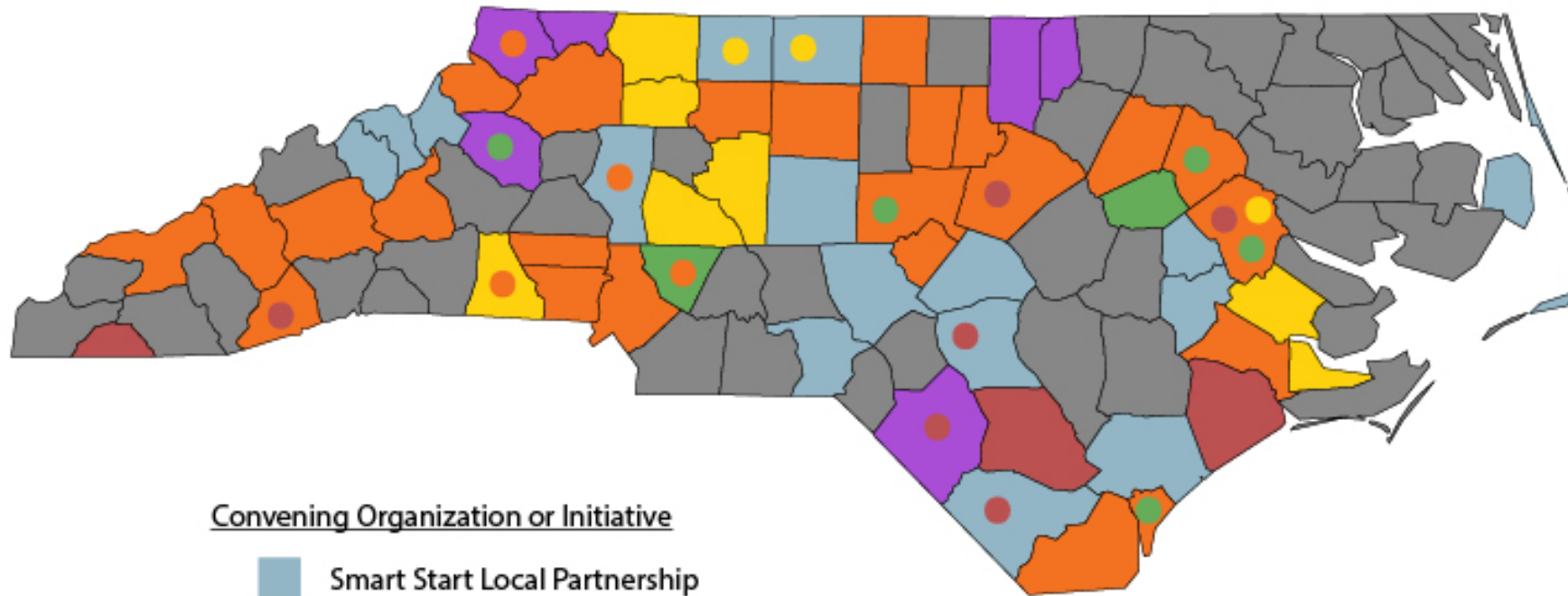
Existing Community Resilience Frameworks











North Carolina Resilience Collaboratives & Coalitions

(as of September 2020)



Convening Organization or Initiative

-  Smart Start Local Partnership
-  Community Prevention Action Plan (Prevent Child Abuse NC)
-  Partnering For Excellence initiative (Benchmarks)
-  Trauma-Informed Communities project (Division of Mental Health/Center for Child & Family Health)
-  County Workgroup (DSS, LHD, school system, EC taskforce, etc.)
-  Other (healthcare system, foundation, nonprofit, community-based, faith, etc.)

COMMUNITY VALUES

SAFETY

TRUST

EMPOWERMENT

COLLABORATION

SUPPORT

HISTORY & CULTURE

MINDSETS

Influencing perspectives and raising awareness toward understanding various forms of childhood adversity, trauma, resilience, and brain science

POWER

Uplifting community stories and including individuals with lived experiences in leadership and decision-making processes

RELATIONSHIPS

Building and sustaining cross-sector or cross-system collaboration and connection among agencies and residents

PROGRAM COMPONENTS

Implementing or expanding evidence-based/informed programs while improving provider practice

POLICIES

Advocating for changes to local, administrative, legislative policies that address childhood adversity and promote resilience

RESOURCES

Increasing financial resources and community investments in solutions that address childhood adversity and promote resilience

Change Hearts and Policy

Turn Grassroots Gold
Be Leader-full

Reckon with Adversarial Allies

Break from Business as Usual

Sharpen your 20/20/20/40=100 vision

Break from Business as Usual



Next steps:



expand our understanding
and define next steps

Starting during the lunch hour

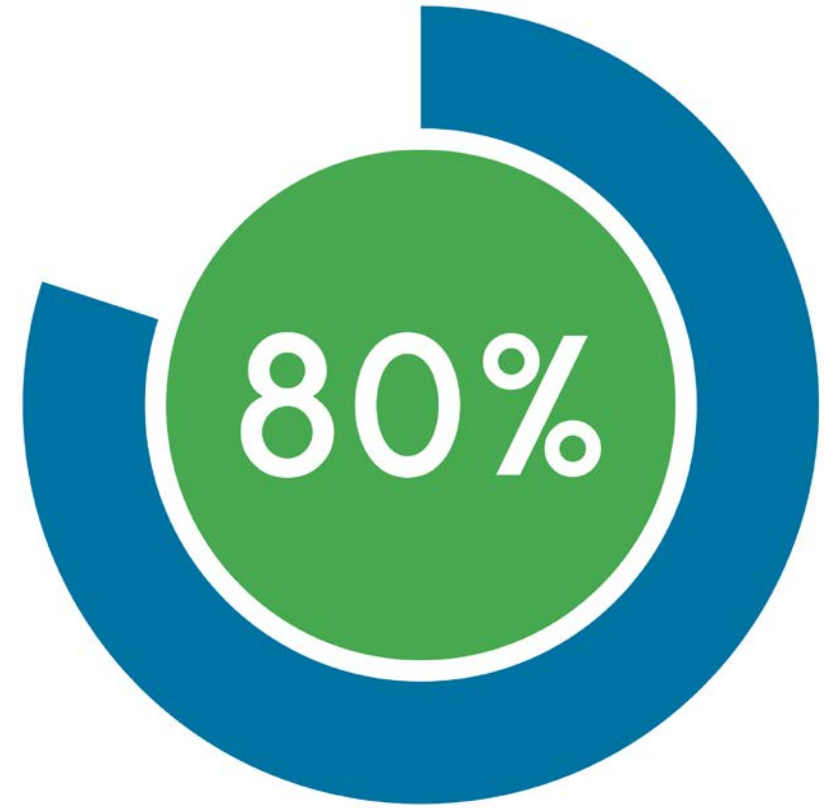
Community Resilience Survey

- 157 responses across 46 counties
- More than 65% of respondents represent coalitions/initiatives that have been around for 1 to 5 years
- Most common keywords used to describe their work:
 - ✓ Resilience
 - ✓ Adverse Childhood Experiences
 - ✓ Trauma
 - ✓ Trauma-Informed
 - ✓ Equity



Community Resilience Survey

- More than 80% of respondents shared that the definitions for both levels of resilience and adversity resonate “a great deal” or “a lot”
- Pair of ACEs, BCR, ACE|R, ECAP are most popular frameworks
- Coalition leadership and collaboration/coordination across agencies were ranked as the top strengths



A Brief Overview of Findings from the Statewide Resilient NC Community Coalition Survey, November 2020



Assets Identified By Local Initiatives

- Collaboration and Coordination Across Agencies
- Membership Diversity
- Coalition Leadership
- Membership Involvement
- Commitment to Racial Equity



Community Coalition Survey, continued



Additional Resources Needed

- Increase in Financial Resources
- Advocating for Policy Change
- Uplifting Community Stories and Lived Experiences
- Building and Sustaining Cross-Sector Partnerships
- Implementing Evidence-Based Programs



COMMUNITY VALUES

SAFETY

TRUST

EMPOWERMENT

COLLABORATION

SUPPORT

HISTORY &
CULTURE

Afternoon
Sessions

MINDSETS

Influencing perspectives and raising awareness toward understanding various forms of childhood adversity, trauma, resilience, and brain science

POWER

Uplifting community stories and including individuals with lived experiences in leadership and decision-making processes

RELATIONSHIPS

Building and sustaining cross-sector or cross-system collaboration and connection among agencies and residents

PROGRAM COMPONENTS

Implementing or expanding evidence-based/informed programs while improving provider practice

POLICIES

Advocating for changes to local, administrative, legislative policies that address childhood adversity and promote resilience

RESOURCES

Increasing financial resources and community investments in solutions that address childhood adversity and promote resilience

- Screening the documentary RESILIENCE
- Trauma and ACEs 101 community presentations

- Hosting parent and community cafes
- Establishing Community Advisory Boards

- Resilience-focused community collaboratives or taskforces with regular convenings

- Trauma-informed clinical and community services (Asset-informed practice, Child Treatment Program, Infant-Toddler Trauma Informed Care)

- Family Forward NC (family-friendly business practices)
- Advocating for Medicaid, WIC, or SNAP

- School Safety Grants (DPI)
- Reconnect for Resilience or CRM training

Community Coalition Survey, continued



Barriers Identified By Local Initiatives:

LACK OF...

- Financial Resources
- Community Awareness
- Membership Capacity/Time Constraints
- Local Government Buy In
- Strategic Action Plan

Community Coalition Survey, continued



Impacts of COVID-19 On Local Initiative Work

- Met More Virtually
- Shift to Focusing on Immediate Needs
- Coalition Stopped Meeting
- Had to Build Capacity to Meet Virtually
- Strategies Felt Relevant, Moved Work Forward

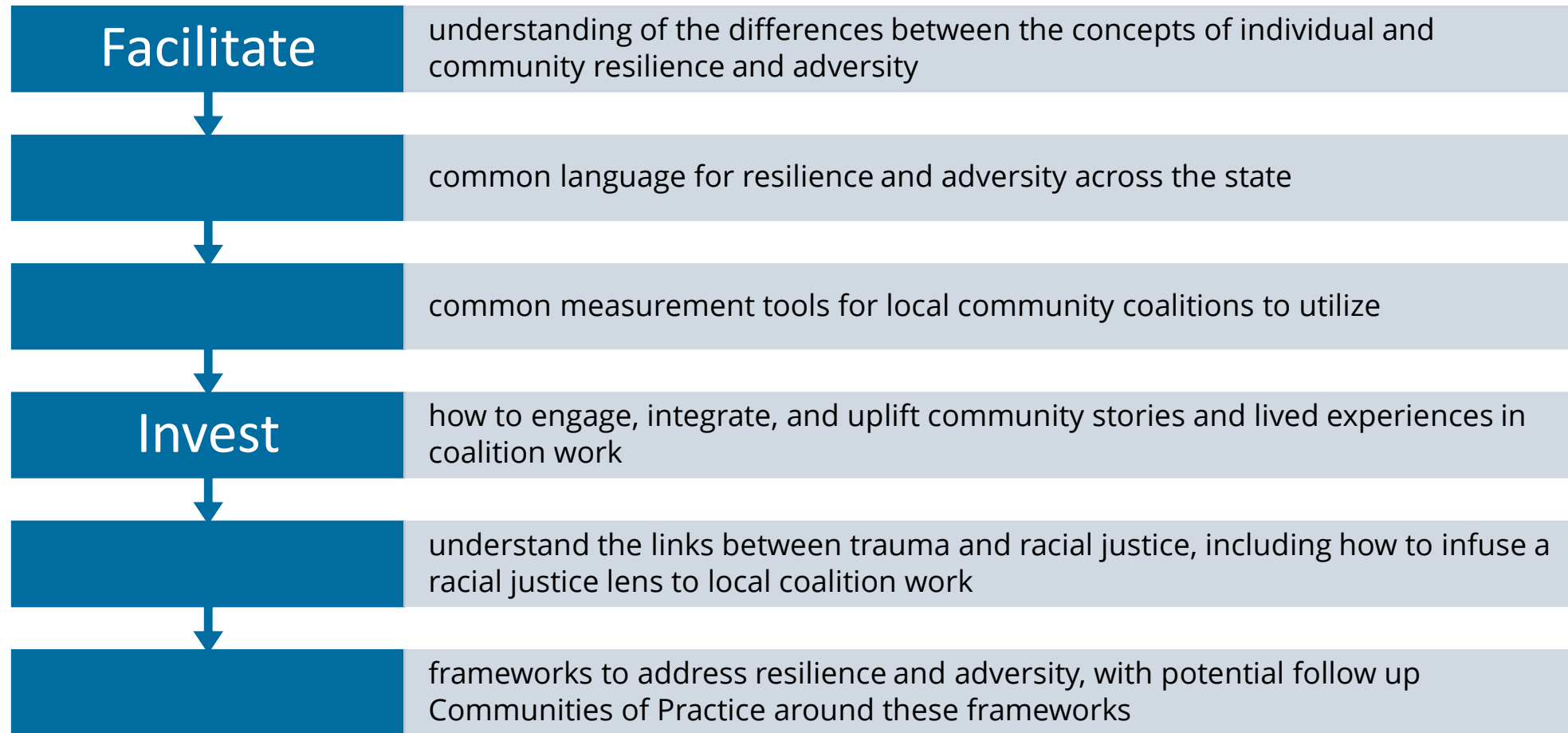
Community Coalition Survey, continued



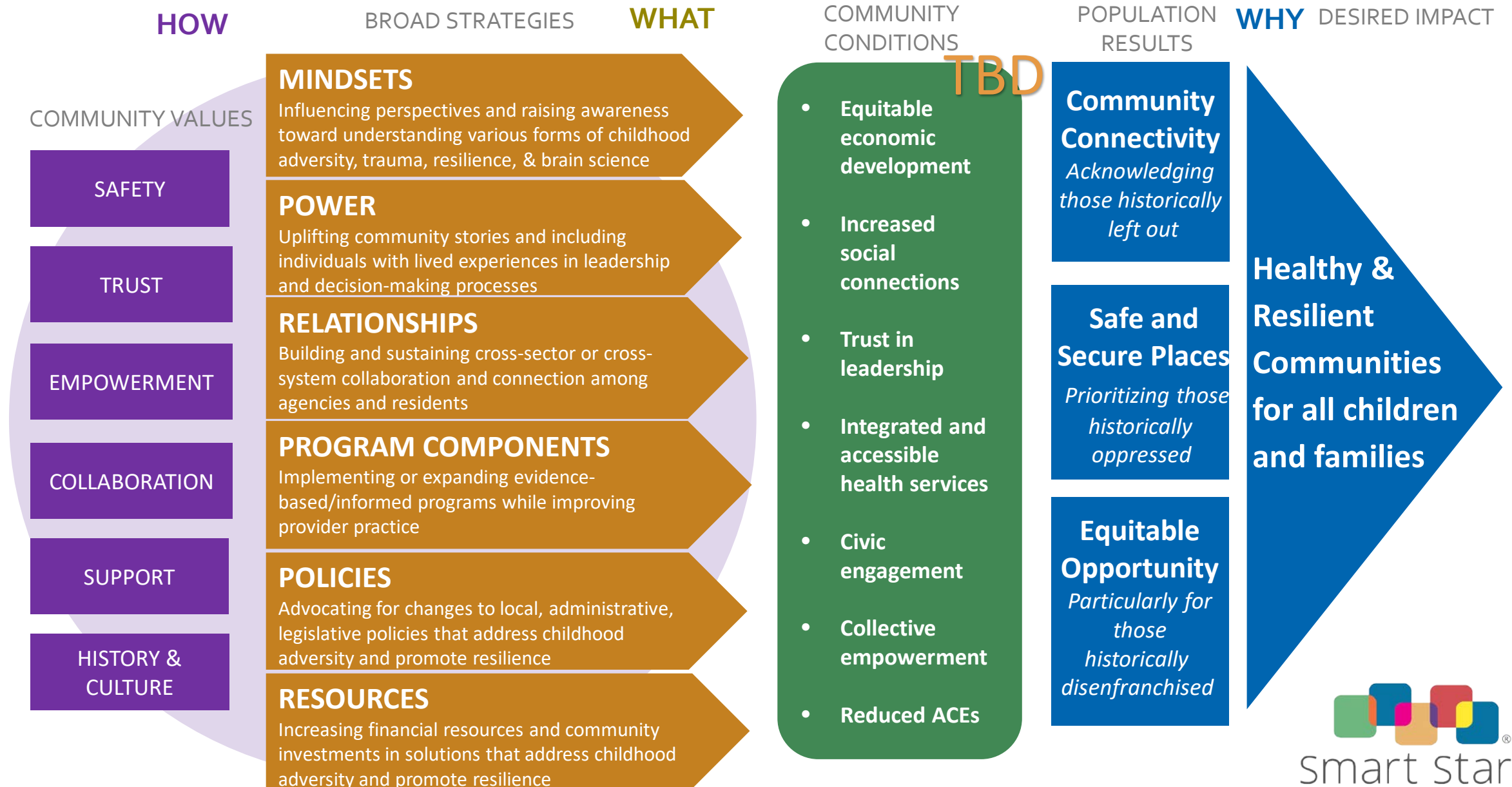
Has Racial Justice Movement Enhanced Work

- 15.15% - A great deal
- 10.10% - A lot
- 31.31% - A moderate amount
- 18.18% - A little
- 25.25% - None at all

Selected Data Driven Suggestions for Next Steps



Theory of Change for Local Collaboratives & Coalitions - *Draft*



Resilience Capacity

Regional
Economic
Capacity

Income Equality

Economic Diversification

Regional Affordability

Business Environment

Socio-
Demographic
Capacity

Educational Attainment

Without Disability

Out of Poverty

Health-Insured

Community
Connectivity
Capacity

Civic Infrastructure

Metropolitan Stability

Homeownership

Voter Participation

Local coalition building is an essential strategy,

NJ ACES Statewide Action Plan

The NJ ACEs Action Plan is driven by five core strategies:

1. Achieve Trauma-Informed and Healing-Centered State Designation
2. Conduct an ACEs Public Awareness and Mobilization Campaign
3. Maintain Community-Driven Policy and Funding Priorities
4. Provide Cross-Sector ACEs Training
5. Promote Trauma-Informed/Healing-Centered Services and Supports



CA ACES Statewide Action Plan

SCREEN | TREAT | HEAL

statewide effort to train providers on how to screen patients for ACEs and treat the impacts of toxic stress



National Scan Coming in 2021

County Profiles and Case Studies

County profiles provide a snapshot of county/community-based resilience-focused collaboratives or coalitions in order to:



- Provide connection between local community-based coalitions across North Carolina (ACES Connection)
- Highlight the diverse strategies collaboratives and coalitions are using to prevent and mitigate adversity and trauma, while promoting resilience

County Profiles and Case Studies

How did they do it?

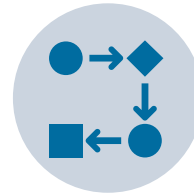
Case studies provide an opportunity for using experiences to inspire action. For example, history, context, and specific strategies to align systems strategies.



Future



Staffing Community Resilience Phase II



Re-engage advisory committees to restart together and decide the way forward.



Discover opportunity for supporting and investing in local coalitions



Develop spaces for local initiatives to learn and connect



Consider how to measure systems change work (community conditions indicators)



Thank you!

Safiyah Jackson, Chief Strategy Officer
The North Carolina Partnership for Children
sjackson@smarstart.org