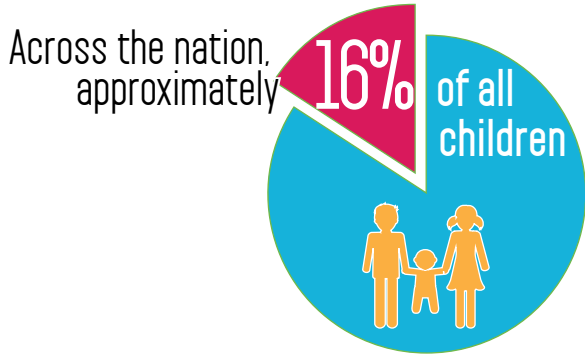


A B Assuring
Better
C D Child Health &
Development

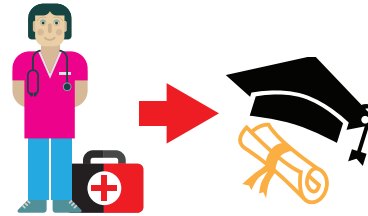
A proven, universal approach to screening young children in health care settings.

ABCD works to increase health and developmental screening and referral rates for all young children by integrating routine screenings into well-child visits. ABCD Coordinators work with medical professionals to increase the use of standardized screening tools and to refer children who may need follow-up for appropriate services.



have some form of disability, including speech and language delays, learning disabilities, and emotional/behavioral disorders.¹

By identifying and addressing these disabilities early, children are more likely to graduate from high school.



Through the Smart Start network, ABCD:

Impacts approximately **65,000** children enrolled in Medicaid



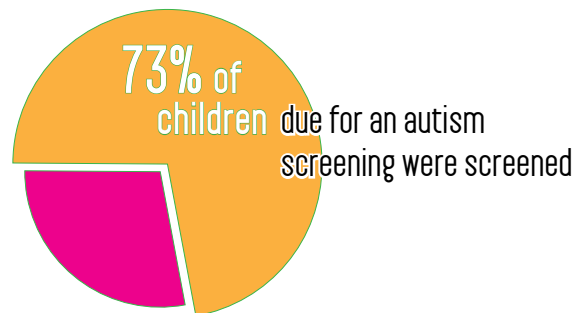
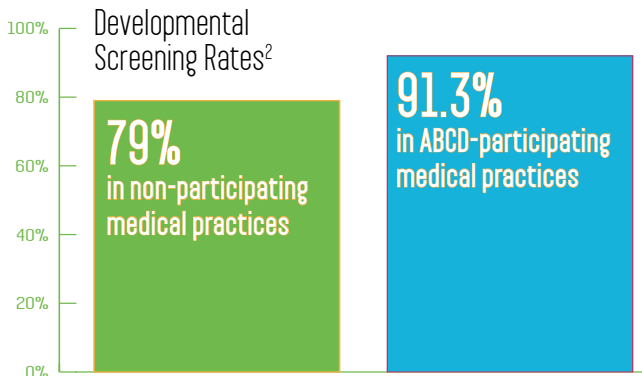
Is working with **246** medical practices



Has **1,345** participating providers



This means more children are likely to get identified for the early intervention services they need:



¹ States in Action: Innovations in State Health Policy, 2015

² As determined by Medicaid Chart Reviews